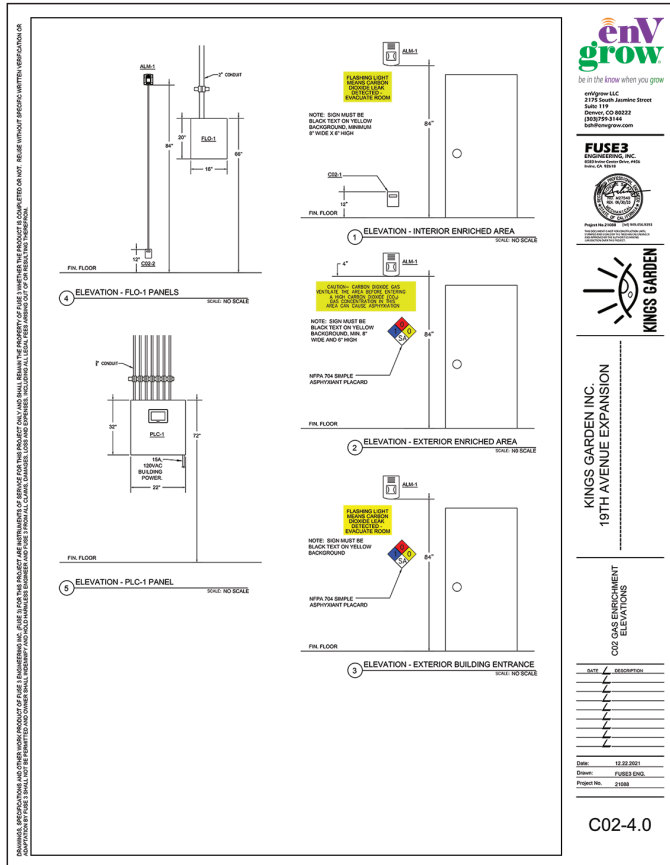


enVgrow Eases Commissioning Process

The official commissioning of an industrial gas delivery system by the local fire marshal is a necessary process that is required before it is activated and occupancy is granted.



be in the know when you grow



enVgrow's controller with readout is the brain, and our unique flow station is the heart of the system. Both are built to the highest industrial standard to ensure a long service life.

enVgrow's knowledge of the commissioning process gives our clients confidence that their new system will be quickly approved and operational, so they can begin to maximize their grows!



Kings Garden recognizes that Intelligent CO₂ delivery is a key factor for maximizing yields and maintaining strain consistency.

With enVgrow's turn-key solution, Kings Garden sailed through all required installation permits for the project and after the system was completed, the fire marshal inspected and commissioned the new system with flying colors.



Let enVgrow's team help you with your facility's next gas enrichment project. To learn more visit enVgrow.com

Safety protocol sheet from our approved drawings by FUSE3

In collaboration with Fuse3 Engineering, enVgrow delivered stamped drawings to our client, Kings Garden Inc, for their new Intelligent CO₂ Enrichment System, which meets all NFPA fire codes and other life safety requirements.



Facilities using state of the art technology combined with brilliant growers keeps Kings Garden best in class.



2175 South Jasmine Street, Suite 119
Denver, Colorado 80222

enVgrow.com

(303) 759-3144
sales@envgrow.com



enVgrow.com